

SUCÇÃO: 1.1/2" BSP RECALQUE: 1.1/2" BSP

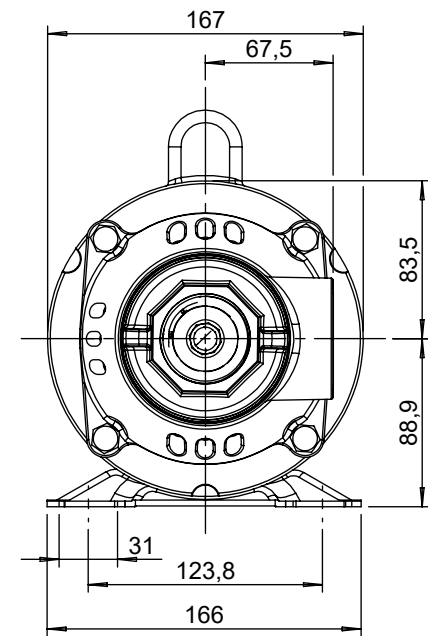
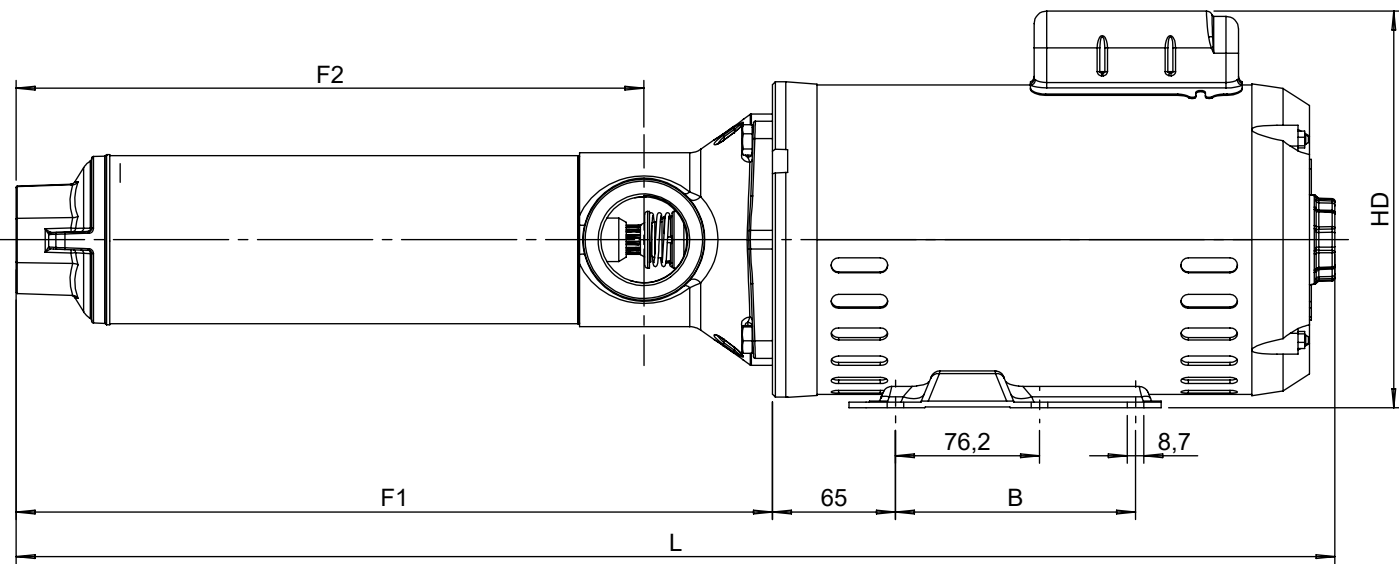


Tabela de medidas

Modelo	CV	B		F1	F2	HD	L	
		Monof.	Trif.				Monof.	Trif.
TBPS2-09	1/2	---	---	402	332	200	637	621
TBPS2-11	3/4	---	---	440	369	200	688	659
TBPS2-13	1,0	---	---	479	408	210	727	698
TBPS2-17	1,5	127	---	556	486	210	836	796
TBPS2-21	2,0	127	---	637	564	210	935	899
TBPS2-27	3,0	127	---	749	681	210	1047	1011
TBPS2-33	3,0	127	---	873	799	210	1191	1156
TBPS3-09	1,0	---	---	402	332	210	650	621
TBPS3-13	1,5	127	---	478	408	210	756	715
TBPS3-16	2,0	127	---	535	467	210	833	797
TBPS3-23	3,0	127	---	671	603	210	989	954
TBPS5-06	1,0	---	---	367	299	210	615	586
TBPS5-09	1,5	127	---	439	371	210	717	676
TBPS5-11	2,0	127	---	487	419	210	785	749
TBPS5-16	3,0	127	---	607	539	210	925	890

 EBARA CORPORATION	EXECUTADO	Carolina M.	13/06/22	Motor WEG IP-21	REVISÃO	LOCAL	Nº DOCUM.	DATA	APROVADO
	VERIFICADO	F. Conte	13/06/22		00	---	---	13/06/22	Gustavo G.
	APROVADO	Gustavo G.	13/06/22						Gustavo G.

Bomba TBPS2/TBPS3/TBPS5 Jet Pump DESENHO Nº **1098052**

ESCALA: 1:4

Em caso de dúvidas pergunte! MATERIAL : PESO: FOLHA 1 de 2 UNID.: Milímetro (mm)

- 464 -

SUCÇÃO: 1.1/2" BSP RECALQUE: 1.1/2" BSP

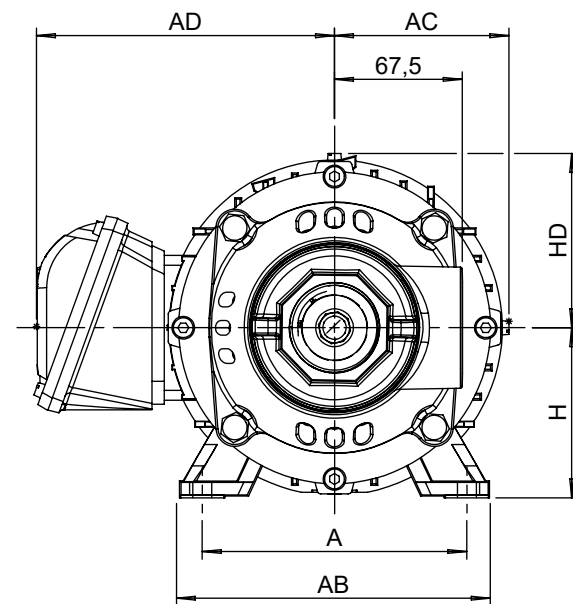
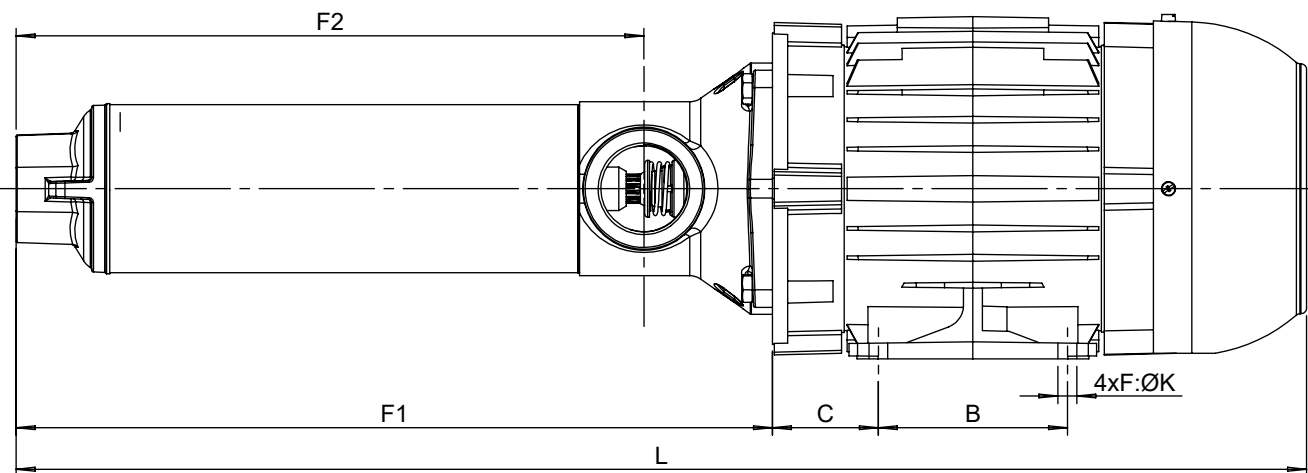


Tabela de medidas - motor Trif.

Modelo	CV	A	AB	AC	AD	B	C	H	HD	K	F1	F2	L
TBPS2-09	1/2										△ 402	332	△ 622
TBPS2-11	3/4	112	132	71	131	90	45	71	71	7	△ 440	369	△ 660
TBPS2-13	1,0										△ 479	408	△ 699
TBPS2-17	1,5										△ 556	486	△ 792
TBPS2-21	2,0	125	149	80	140	100	50	80	80	10	△ 637	564	△ 899
TBPS2-27	3,0						749	681	△ 1016				
TBPS2-33	3,0	140	164	92	149		56	90	92		△ 873	799	△ 1156
TBPS3-09	1,0	112	132	71	131	90	45	71	71	7	△ 402	332	△ 622
TBPS3-13	1,5										△ 478	408	△ 715
TBPS3-16	2,0	125	149	80	140	100	50	80	80	10	535	467	797
TBPS3-23	3,0	140	164	92	149			56	90		92		671
TBPS5-06	1,0	112	132	71	131	90	45	71	71	7	367	299	587
TBPS5-09	1,5							80			439	371	676
TBPS5-11	2,0	125	149	80	140	100	50	80	80	10	487	419	749
TBPS5-16	3,0	140	164	90	149			56	90		92		607

 EBARA CORPORATION	EXECUTADO	Carolina M.	14/06/22	Motor WEG IP-55	△	---	AE-22.09.01	06/09/21	Gustavo G.
	VERIFICADO	F. Conte	14/06/22		00	---	---	14/06/22	Gustavo G.
	APROVADO	Gustavo G.	14/06/22						
	NOME	DATA CRIAÇÃO	OBSERVAÇÃO	REVISÃO	LOCAL	Nº DOCUM.	DATA	APROVADO	

Bomba TBPS2/TBPS3/TBPS5 Jet Pump DESENHO Nº **1098052** ESCALA: 1:4

Em caso de dúvidas pergunte! MATERIAL : PESO: FOLHA 2 de 2 UNID.: Milímetro (mm)

- 464 -